

FLAT ROOF SOLUTIONS | COMPARISON GUIDE



Every project has unique requirements – let the Unirac Commercial Team help optimize the right solution to match your specific project parameters. Our design experts can identify the product solutions that satisfy your specific site variables and project goals.

SUBMIT A QUOTE!



SCAN HERE

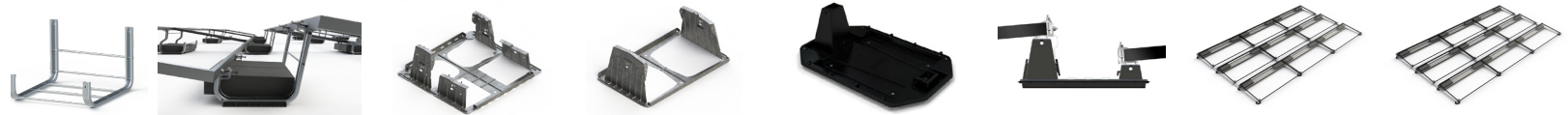
	ROOFMOUNT				ECOFOOT		GRIDFLEX	
	Reliable Simplicity				Upgrade in Aesthetics and Aerodynamics		Grid Based For Lower Ballast Weight	
	Flat roof's workhorse offers a 10°, 5°, and Dual Tilt solution with minimal SKUs. As simple and easy as ballasted solar can be.				A great-looking flat roof solution with integral wind deflectors to reduce uplift. Preassembled clamps and stackable bays are ready for modules in seconds.		Grid-based structure provides load sharing to reduce system weight. Preassembled, universal components for install speed and flexibility.	
	RM10	RM10 EVO	RM5	RMDT	EcoFoot2+	EcoFoot5D	GridFlex 5°	GridFlex 10°
SYSTEM ADVANTAGE	Bay + Clamps #1 Bifacial Solution Validated Install Speed	Bay + Clamps #1 Bifacial Solution CPP Wind Tunnel Tested Module density at 10°	2 Row Space Options Wind Deflector to Reduce Ballast	Max Module Density Lowest Cost Best Aerodynamics	3 SKUs Validated Install Speed Landscape and Portrait	Each Module Supported by 6 Connection Points	2 Row Space Options Fewer Components than other Grid Systems	3 Row Space Options Fastest Grid System
LIGHTEST SYSTEM WEIGHT (PSF)								
OPTIMAL FOR WIND LOADS								
OPTIMAL FOR SNOW LOADS								
INSTALL EASE								

KEY: 3 ICONS = GOOD
5 ICONS = BEST

EVERYTHING YOU NEED FOR A QUICK, PROFESSIONAL INSTALLATION

FOR QUESTIONS OR CUSTOMER SERVICE VISIT UNIRAC.COM OR CALL (505) 248-2702

FLAT ROOF SOLUTIONS | COMPARISON GUIDE



	ROOFMOUNT				ECOFOOT		GRIDFLEX							
	RM10	RM10 EVO	RM5		RMDT	EcoFoot2+		EcoFoot5D		GridFlex 5°		GridFlex 10°		
TILT AND ORIENTATION	10° South Landscape	10° South Landscape	5° South Landscape		8° East/West Landscape	10° South Landscape 5° South Portrait		5° South Landscape		5° South Landscape		10° South Landscape		
ROW SPACE	18.5"	13"	7.5"	11"	8.3" Valley 1.1" Peak	18.9"		9.8"		7.5"	11"	11"	14"	17"
SHADE ANGLE	20°	27.5°	25°	18°	8°	20°		20°		24°	18°	37°	27°	22°
MODULE DENSITY	66%	76%	83%	77%	89%	67% Land	80% Port	79%		83%	78%	78%	74%	78%
MODULE FRAME COMPATIBILITY	Universal Return Flange Clamp	Universal Return Flange Clamp	Top Clamp 2 SKUs 30-40mm 41-45mm		Top Clamp 2 SKUs 30-40mm 41-45mm	Universal Top Clamp 30-50mm		Universal Top Clamp 30-50mm		Universal Return Flange Clamp		Universal Return Flange Clamp		
MATERIAL	Al Basket and Clip SS Hardware	Al Basket and Clip SS Hardware	Galvanized Steel SS Hardware		Galvanized Steel SS Hardware	PC/ASA Base Al Clamp SS Hardware Galvanized Steel or Al Deflector		PC/ASA Base Al Clamp SS Hardware Galvanized Ballast Tray		Galvalume Rails Galvanized Ballast Tray Al Clamps SS Hardware		Galvalume Rails Al Clamps SS Hardware Galvanized Ballast Tray Galvanized Deflector		
BALLAST BLOCK CAPACITY	4 per Bay	3.5 per Bay	2 per Bay		6 per Ridge Bay 2 per Valley Bay	3 per Base without Shade		5 per 72-cell Module 4 per 60-cell Module		4 per 72-cell Module 3 per 60-cell Module		5 per 72-cell Module 4 per 60-cell Module		

EVERYTHING YOU NEED FOR A QUICK, PROFESSIONAL INSTALLATION

FOR QUESTIONS OR CUSTOMER SERVICE VISIT UNIRAC.COM OR CALL (505) 248-2702